

PROGRAMMATIC AGREEMENT
AMONG
THE UNITED STATES ARMY GARRISON, YUMA PROVING GROUND,
THE ARIZONA STATE HISTORIC PRESERVATION OFFICER, AND
THE ADVISORY COUNCIL ON HISTORIC PRESERVATION
REGARDING THE
OPERATIONS, MAINTENANCE, AND DEVELOPMENT OF
YUMA PROVING GROUND, ARIZONA

WHEREAS, the United States Army Garrison Yuma Proving Ground (USAG YPG) proposes to continue to coordinate and administer an ongoing program of operations, maintenance, and development (Projects); and

WHEREAS, the Army mission at Yuma Proving Ground (YPG) is a test facility for weapons and munitions, and encompasses approximately 1,300 square miles in southwestern Arizona, north of Yuma; and

WHEREAS, pursuant to Section 106 of the National Historic Preservation Act (NHPA), 16 USC § 470f, and its implementing regulations (36 Code of Federal Regulations [CFR] Part 800), USAG YPG has determined that YPG Projects are undertakings and may have adverse effects on historic properties and has consulted with the Arizona State Historic Preservation Officer (SHPO); and

WHEREAS, due to the routine nature of many actions that are part of the ongoing management and operation of YPG, USAG YPG has determined it is appropriate to develop a programmatic agreement (PA) pursuant to 36 CFR 800.14(b)(1) (iv) to address potential adverse effects from these routine activities; and

WHEREAS, the Area of Potential Effects (APE) for YPG Projects is defined as all lands and built environment within the YPG boundary (Attachment A); and

WHEREAS, USAG YPG, as part of its Section 106 and Section 110 responsibilities, has previously conducted historic property inventories of 163,071 acres of YPG from 1981 to the present (Attachment A) and has identified 825 properties that are listed in or have been determined eligible for listing in the NRHP (Attachment B); and

WHEREAS, buildings, structures, sites, and objects that are 45 years of age or older that have not yet been evaluated for NRHP eligibility will be treated as eligible for listing in the NRHP for this PA; and

WHEREAS, USAG YPG recognizes that properties of traditional religious and cultural importance have significance to Native American tribes although those sites may not be eligible for the NRHP; and

WHEREAS, USAG YPG had a Memorandum of Agreement (MOA) with the SHPO and the Advisory Council on Historic Preservation (ACHP) that resolved the effects on historic properties from the Base Realignment and Closure program, executed on 19 August 1992, but all elements of that undertaking have been concluded so the terms of the MOA are no longer in force; and

WHEREAS, undertakings at properties for which effects have been taken into account through the *Program Comment for Capehart and Wherry Era Army Family Housing and Associated Structures and Landscape Features (1949–1962)*, *Program Comment for World War II and Cold War Era (1939-1974) Ammunition Storage Facilities*, *Program Comment for Cold War Era Unaccompanied Personnel Housing (1946-1947)*, and the *Program Comment for DoD Rehabilitation Treatment Measures* are not part of this PA; and

WHEREAS, pursuant to Army Regulation 200-1, the Garrison Manager is the USAG YPG official responsible for NHPA compliance; and

WHEREAS, in accordance with 36 CFR 800.6(a)(1), USAG YPG has notified the ACHP of its adverse effect determination, providing the required documentation, and the ACHP has chosen to participate in accordance with 36 CFR 800.6(a)(1)(iii); and

WHEREAS, in accordance with 36 CFR 800.14(f), USAG YPG has consulted with the Ak-Chin Indian Community, the Chemehuevi Indian Tribe, the Cocopah Indian Tribe, the Colorado River Indian Tribes, the Fort McDowell Yavapai Nation, the Fort Mojave Indian Tribe, the Gila River Indian Community, the Hopi Tribe, the Quechan Indian Tribe, the Salt River Pima Maricopa Indian Community, the San Carlos Apache Tribe, the Tohono O’odham Nation, the Yavapai-Apache Nation, and the Yavapai-Prescott Indian Tribe and has invited them to concur in this PA; and

WHEREAS, the _____ tribes have chosen to sign this PA as concurring parties; and

WHEREAS, in accordance with 36 CFR 800.14(b), USAG YPG has provided the public an opportunity to comment by placing notice of this PA development in the *Yuma Sun* and *Desert Messenger* (Quartzsite, Arizona) newspapers and by consulting with various organizations previously identified as having an interest in cultural resources management activities on YPG lands (Attachment C), and has addressed the recommendations of the public and reviewing agencies in the development of this PA;

Now, therefore, the USAG YPG, the SHPO, and the ACHP agree that this PA shall be implemented in accordance with the following stipulations in order to take into account potential effects on historic properties from ongoing operations, maintenance, and development of YPG.

Stipulations

USAG YPG shall ensure that the following measures are carried out:

I. Identification of Historic Properties

A. YPG Areas Requiring No Additional Cultural Resources Survey

In consultation with the SHPO, the USAG YPG Cultural Resources Manager (CRM) will define those YPG lands that require no additional cultural resources survey. The YPG land areas excluded from future historic property inventories will be delineated in the installation Geographic Information System (GIS) database and on installation maps. Following review of the maps and written agreement between the signatories, these areas will not be subject to additional cultural resources inventory, and projects that occur in these areas will have a finding of "No Historic Properties Affected."

Maps will be updated every five (5) years. These areas will be:

1. Lands that have been adequately surveyed by past investigations.
2. Dedicated impact areas and high hazard impact areas. Impact areas are used indefinitely to contain fired or launched ammunition and explosives and the resulting fragments, debris, and components; high hazard impact areas contain sensitive, highly hazardous materials. The impact areas are delineated on installation maps and GIS (Attachment D).
3. Other areas that are identified as being hazardous to human health and safety including, but not limited to, open burn/open detonation areas, chemical test areas, newly identified unexploded ordnance sites, and environmental compliance and restoration sites. These areas are delineated on installation maps and GIS (Attachment D).
4. Lands that have been extensively disturbed by past human activities, including cantonment areas (Attachment D). In the unlikely event that a cultural resource is discovered in any of the previously disturbed areas, the stipulation for inadvertent discovery (stipulation III) will be implemented.
 - a. If a discovery results in identification of historic properties within the previously disturbed areas, Attachment D will be updated to delineate the discovered historic properties and distributed to all consulting parties, subject to the confidentiality provisions of 36 CFR 800.11(c).

B. YPG Areas Requiring Cultural Resources Survey

YPG lands requiring additional survey are categorized as having low, moderate, or high potential to possess historic properties. Cultural resources inventories for these lands will be undertaken by YPG when undertakings or activities are proposed and funded.

1. Predictive modeling will guide inventory and monitoring efforts in areas where survey is warranted; areas of low sensitivity for cultural resources will be surveyed at less than 100 percent, as determined by the CRM, provided these areas have been reviewed by the SHPO and tribes as part of their concurrence

with the PA. A summary of the 2011 predictive model is found in the Fiscal Year 2012-2016 Integrated Cultural Resources Management Plan; the full study for the predictive model is available upon request. The predictive model will be updated at regular intervals with new archaeological and ethnographic data. Update intervals will be based on number of sites identified, acres surveyed, or number of locations refined.

2. Undertakings whose effects occur in non-ordnance contaminated and historic World War II training and ordnance contaminated areas will be surveyed at a lower level of intensity than would otherwise be appropriate or not be surveyed at all. The CRM will determine the need and adequacy of survey for proposed undertakings in contaminated areas and will decide what level of survey will be performed. Some contaminated areas may be off limits to ground-disturbing activities, including archaeological surveys. Undertakings in contaminated areas that do not pose an imminent threat will not be exempt from Section 106 (Attachment D).
3. Undertakings requiring changes in land use designation for project development within dedicated impact areas shall be subject to Section 106 review (Attachment D).
4. For undertakings requiring surveys of 200 acres or less that are not in exempt areas, USAG YPG will identify the APE without consultation. The APE will address direct, indirect, and cumulative effects. USAG YPG will use standard procedures based on SHPO guidance for identification efforts (<http://azstateparks.com/SHPO/review.html>).
5. For undertakings requiring surveys larger than 200 acres that are not in exempt areas, the APE will be defined in consultation with the SHPO while maximizing benefit to the YPG mission and identification of historic properties.
 - a. USAG YPG will notify the SHPO twenty-five (25) calendar days in advance of the proposed inventory and request comments on the proposed approach.
 - b. If no comments are forthcoming within twenty (20) calendar days of receipt of all pertinent documentation, USAG YPG will proceed with the proposed inventory.
 - c. If there are comments, USAG YPG will consult to coordinate comments and inventory planning efforts.
6. Inventoried areas with no cultural resources (i.e., no archaeological sites or isolated features or artifacts) identified in them will be defined as “negative surveys.”
 - a. Negative survey reports will not be provided to SHPO or other consulting parties unless requested. There will be no further consultation on these reports unless requested.
 - b. A list of negative survey reports will be part of the annual report, per stipulation VI.

C. Evaluation of Identified Cultural Resources

1. All newly identified cultural resources will be evaluated by USAG YPG in accordance with 36 CFR Part 63 and bulletins, guidance, and documents produced by the National Park Service, in consultation with SHPO, to determine if they are eligible for the NRHP.
2. SHPO will concur or fail to concur with USAG YPG determinations within thirty (30) calendar days of receipt of all pertinent documentation. If no comments are received within that time, concurrence with USAG YPG determinations will be assumed. Any objection will be resolved in accord with stipulation VII.
3. Previously identified but unevaluated cultural resources will be evaluated by USAG YPG in a phased approach in accordance with 36 CFR Part 63 and bulletins, guidance, and documents produced by the National Park Service, in consultation with SHPO, tribes, and other consulting parties, as needed, to determine if they are eligible for the NRHP.
4. If a cultural resource may be a Traditional Cultural Property, in accordance with National Park Service Bulletin 38, USAG YPG will consult with any communities or tribes that may ascribe significance to the property prior to submitting the determination of eligibility to the SHPO.

II. Effects of Proposed Undertakings

A. Projects that have no effects on historic properties

Certain projects and activities that take place on YPG, as defined in Attachment E, are presumed to have minimal potential to cause effects on historic properties. Those projects and activities will not require review by SHPO or other concurring parties, so long as all terms and conditions set forth in Attachment E are satisfactorily met.

1. Potential projects that will have no effects on any historic properties are specified in the list of "Exempt Undertakings" contained in Attachment E.
2. Any signatory to this PA may request a revision to Attachment E. Revisions to Attachment E may be made and will go into effect upon the written agreement of the signatories to this PA. Such revisions do not require that this PA be formally amended; however, USAG YPG shall provide a clean copy of the revised Attachment E, clearly identifying the date it became effective, to the signatories and concurring parties for their files.
3. All parties to this PA agree that these activities will have no effects on historic properties, provided there are no newly recorded archaeological sites and no newly recorded sites that do not have eligibility concurrence in the APE. USAG YPG will document any project having a finding of "No Historic Properties Affected" and include a list of such projects in the annual report in stipulation VI.

B. Projects that are likely to affect historic properties

1. For those projects not addressed in Attachment E, USAG YPG will follow the standard processes as defined in 36 CFR § 800 Subpart B.

2. All actions determined to have an adverse effect and their associated mitigation measures will be compiled in the annual report as noted in stipulation VI.

III. Inadvertent Discoveries

- A.** If human remains are identified, including evidence of cremation, activity shall immediately cease in the immediate area of the discovery. USAG YPG shall make every effort to avoid further disturbance to the remains and a minimum 20 meter radius will be flagged and/or marked with visibility tape to protect the remains from further disturbance. The individual making the discovery shall immediately notify the USAG YPG Garrison Manager or CRM.
1. If the remains appear to be the victim of a recent crime or accidental death, USAG YPG Garrison Manager or CRM shall contact the appropriate authorities (military law enforcement, medical examiner, YPG Command Judge Advocate) and notify them of the discovery.
 2. If the remains are determined to be Native American in origin, USAG YPG shall follow the requirements of the Native American Graves Protection and Repatriation Act (NAGPRA) and the implementing regulations, 43 CFR Part 10. The USAG YPG Garrison Manager or CRM shall initiate consultation with any known lineal descendants and culturally affiliated tribes by telephone notification and written confirmation within three working days. USAG YPG shall consult with SHPO and the appropriate tribes on a written plan of action to address the remains. If Native American remains are discovered due to a project or activity, USAG YPG shall determine if that project or activity can be relocated. If USAG YPG determines that relocation of the project or activity is feasible, then the project or activity shall be relocated to avoid the remains, and USAG YPG, in consultation with the tribes, shall decide on the best treatment for the remains, including in situ preservation.
 3. If the USAG YPG determines that the remains are not Native American and do not warrant criminal investigation, the CRM shall immediately notify the SHPO and consult to identify descendants or other interested parties, if any. USAG YPG, in consultation with SHPO and any interested parties, shall develop a plan for the respectful treatment and disposition of the remains.
- B.** In the event cultural resources are discovered inadvertently, the CRM will assess the discovery to determine if the resource retains integrity and meets any of the eligibility criteria for listing in the NRHP in accord with 36 CFR Part 63.
1. If the discovery is in a construction area, work shall cease in the immediate vicinity (within approximately a 20 meter radius) to protect the resource. The cease-work area shall be marked with flags or visibility tape to clearly delineate the boundaries.
 2. If the property is determined eligible by USAG YPG, the SHPO will be notified and consulted on what type of treatment, if any, shall be performed. SHPO will concur or fail to concur to USAG YPG determinations within thirty (30) calendar

days of receipt of all pertinent documentation. If no comments are received within that time, concurrence with USAG YPG determinations will be assumed. Any objection will be resolved in accord with stipulation VII.

3. If tribal consultation indicates that the property may have significance for tribes, they will be notified and consulted with at the same time and in the same manner as the SHPO.
4. The specific steps to be taken by USAG YPG personnel in the event of an inadvertent discovery are detailed in the "Inadvertent Discovery of Archaeological Deposits" Standard Operating Procedure (SOP) in Attachment F.

IV. Emergency Undertakings

- A. Emergency situations are those actions deemed necessary by USAG YPG as an immediate and direct response to an emergency situation, which is a disaster or emergency declared by the President of the United States or Governor of Arizona, or other imminent threat to life or property. Emergency actions under this PA are only those implemented within thirty (30) calendar days from the initiation of the emergency situation.
- B. USAG YPG will carry out the requirements of 36 CFR 800.12(b), with the following exception as provided by §800.12(b)(2). When a disaster or emergency has been declared by the President of the United States or the Governor of Arizona, and an immediate threat to life or property requires emergency operations by USAG YPG that affect the character or use of historic properties, USAG YPG shall notify SHPO, affected tribes, and the ACHP within 48 hours of commencing the emergency undertaking. Consultation, including the opportunity to review and comment on the emergency undertaking, shall be conducted as soon as possible to determine how to proceed in a fashion that will secure, as fully as practicable under the circumstances, the protections of Section 106 of the NHPA.

V. Professional Standards and Qualifications

All archaeological, ethnographic, cultural landscape, history, and/or architectural history investigations and compliance reviews of any given project carried out at YPG shall be conducted by or under the direct supervision of an individual or individuals who meet, at a minimum, the Secretary of the Interior's Professional Qualifications Standards for History, Architectural History and/or Archaeology as appropriate (48 FR 44738-44739).

VI. Annual Report and Review

- A. USAG YPG shall prepare an annual report and distribute it to all consulting parties on this PA within 60 calendar days of each new fiscal year.
- B. The report will include, but not be limited to, a list of inventories conducted where no cultural resources were identified, a list of inventories with identified cultural

resources, additional properties determined eligible for the NRHP, a list of projects that were reviewed but had no effect on any historic properties, a list of undertakings that have adversely affected historic properties along with their mitigation, and a list of all inadvertent discoveries. It shall also include a list of any newly proposed projects and any changes USAG YPG might consider toward improvement in implementation of any stipulations.

VII. Dispute Resolution

Should any signatory or concurring party to this PA object at any time to any actions proposed or the manner in which the terms of this PA are implemented, USAG YPG shall consult with such party to resolve the objection. If USAG YPG determines that such objection cannot be resolved, USAG YPG will:

- A.** Forward all documentation relevant to the dispute, including USAG YPG's proposed resolution, to the ACHP. The ACHP shall provide USAG YPG with its advice on the resolution of the objection within thirty (30) days of receiving adequate documentation. Prior to reaching a final decision on the dispute, USAG YPG shall prepare a written response that takes into account any timely advice or comments regarding the dispute from the ACHP, signatories and concurring parties, and provide them with a copy of this written response. USAG YPG will then proceed according to its final decision.
- B.** If the ACHP does not provide its advice regarding the dispute within the thirty (30) day time period, USAG YPG shall make a final decision on the dispute and proceed accordingly. Prior to reaching such a final decision, USAG YPG shall prepare a written response that takes into account any timely comments regarding the dispute from the signatories and concurring parties to the PA, and provide them and the ACHP with a copy of such written response.
- C.** The responsibilities of USAG YPG to carry out all other actions subject to the terms of this PA that are not the subject of the dispute remain unchanged.
- D.** At any time during implementation of the measures stipulated in this PA, should an objection pertaining to this PA or the effect of an undertaking on historic properties be raised by a member of the public, USAG YPG shall notify the parties to this PA and take the objection into account, consulting with the objector and, should the objector so request, with any of the parties to this PA to resolve the objection.

VIII. Amendments

- A.** Any signatory to this PA may propose in writing to USAG YPG that it be amended and the nature of the proposed amendment.

- B. USAG YPG shall consult with the signatories to this PA to consider the proposed amendment. If there is agreement among all signatories, the document shall be amended accordingly and the amendment will be effective on the date of the final signature.
- C. Any disputes with regard to any amendments shall be considered in accord with stipulation VII.

IX. Termination

- A. If USAG YPG determines it cannot implement the terms of this PA, or if another signatory determines it is not being implemented in accordance with its terms, then it may be proposed to terminate the agreement.
- B. The party proposing termination shall notify all signatories, explain the reasons for the proposed termination, and afford all signatories thirty (30) calendar days from receipt of the notification to consult and seek alternatives to termination. The consultation shall include all signatories, concurring parties, and any other parties that may be affected by the termination.
- C. If the consultation fails to find alternatives to termination, then USAG YPG shall notify all signatories, concurring parties, and other consulting parties in writing that this PA is terminated.
- D. In the event of termination, USAG YPG shall comply with 36 CFR Part 800, Subpart B, for each undertaking that would otherwise be managed in accordance with this PA.

X. Monitoring

- A. The SHPO and the ACHP may monitor any activities carried out pursuant to this PA, and the ACHP will review any activities if so requested. The USAG YPG Garrison Manager will cooperate with the SHPO and the ACHP should they request to monitor or to review project files for activities carried out pursuant to this PA.
- B. If the Army becomes aware that any historic property on YPG has been inadvertently damaged by an action or undertaking not in conformity with the review process set out in this PA or other applicable agreement, the USAG YPG Garrison Manager will ensure that a report describing how the damage occurred and the extent of damage to the historic property involved is provided to the SHPO.

XI. Duration

- A. This PA will become effective on the date of the final signature and continue in force for five (5) years.
- B. At least six (6) months prior to the end of the 5-year period, the signatories shall consult to determine whether this PA remains satisfactory. If there is agreement, USAG YPG will revise and update the PA as needed, consult with all signatories, concurring parties, and any parties that may become additional signatories. The updated agreement will be signed and executed by all signatories prior to the expiration of the 5-year period.
- C. If an extension of time is warranted, all signatories will agree in writing until such time as this PA may be revised and updated.

XII. Anti-Deficiency Act

USAG YPG obligations under this PA are subject to the availability of funds and the stipulations of this PA are subject to the provisions of the Anti-Deficiency Act. USAG YPG will make reasonable and good faith efforts to secure the necessary funds to implement this PA in its entirety. If compliance with the Anti-Deficiency Act alters or impairs USAG YPG's ability to implement the stipulations of this PA, USAG YPG will consult with the SHPO and ACHP in accordance with the amendment and termination procedures in stipulations VIII and IX.

Execution of this PA and implementation of its terms evidence that USAG YPG has afforded the ACHP reasonable opportunity to comment on the operations, maintenance, and development of YPG, and that USAG YPG is taking into account the effects of the undertakings on historic properties.

SIGNATORIES:

U.S. Army Yuma Proving Ground

_____ Date _____
 Richard T. Martin, Garrison Manager, U.S. Army Garrison, Yuma

Arizona State Historic Preservation Officer

_____ Date _____
 James Garrison, State Historic Preservation Officer

Advisory Council on Historic Preservation

John M. Fowler, Executive Director

Date _____

CONCURRING PARTIES

Ak-Chin Indian Community

Louis J. Manuel, Jr., Chairman

Date: _____

Chemehuevi Indian Tribe

Charles Wood, Chairman

Date: _____

Cocopah Indian Tribe

Sherry Cordova, Chairwoman

Date: _____

Colorado River Indian Tribes

Eldred Enas, Chairman

Date: _____

Fort McDowell Yavapai Nation

Clinton M. Pattea, President

Date: _____

Fort Mojave Indian Tribe

Timothy Williams, Chairman

Date: _____

Gila River Indian Community

Gregory Mendoza, Governor

Date: _____

Hopi Tribe

LeRoy N. Shingoitewa, Chairman

Date: _____

Quechan Indian Tribe

Keeny Escalanti, Sr., President

Date: _____

Salt River Pima-Maricopa Indian Community

Diane Enos, Chairwoman

Date: _____

San Carlos Apache Tribe

Terry Rambler, Chairman

Date: _____

Tohono O'Odham Nation

Ned Norris, Jr., Chairman

Date: _____

Yavapai-Apache Nation

David Kwail, Chairman

Date: _____

Yavapai-Prescott Indian Tribe

Ernest Jones, Sr., Chairman

Date: _____

Attachment A – Area of Potential Effects and areas previously surveyed for cultural resources at YPG

Attachment B – List of known NRHP properties at YPG

Attachment C – List of consulting parties

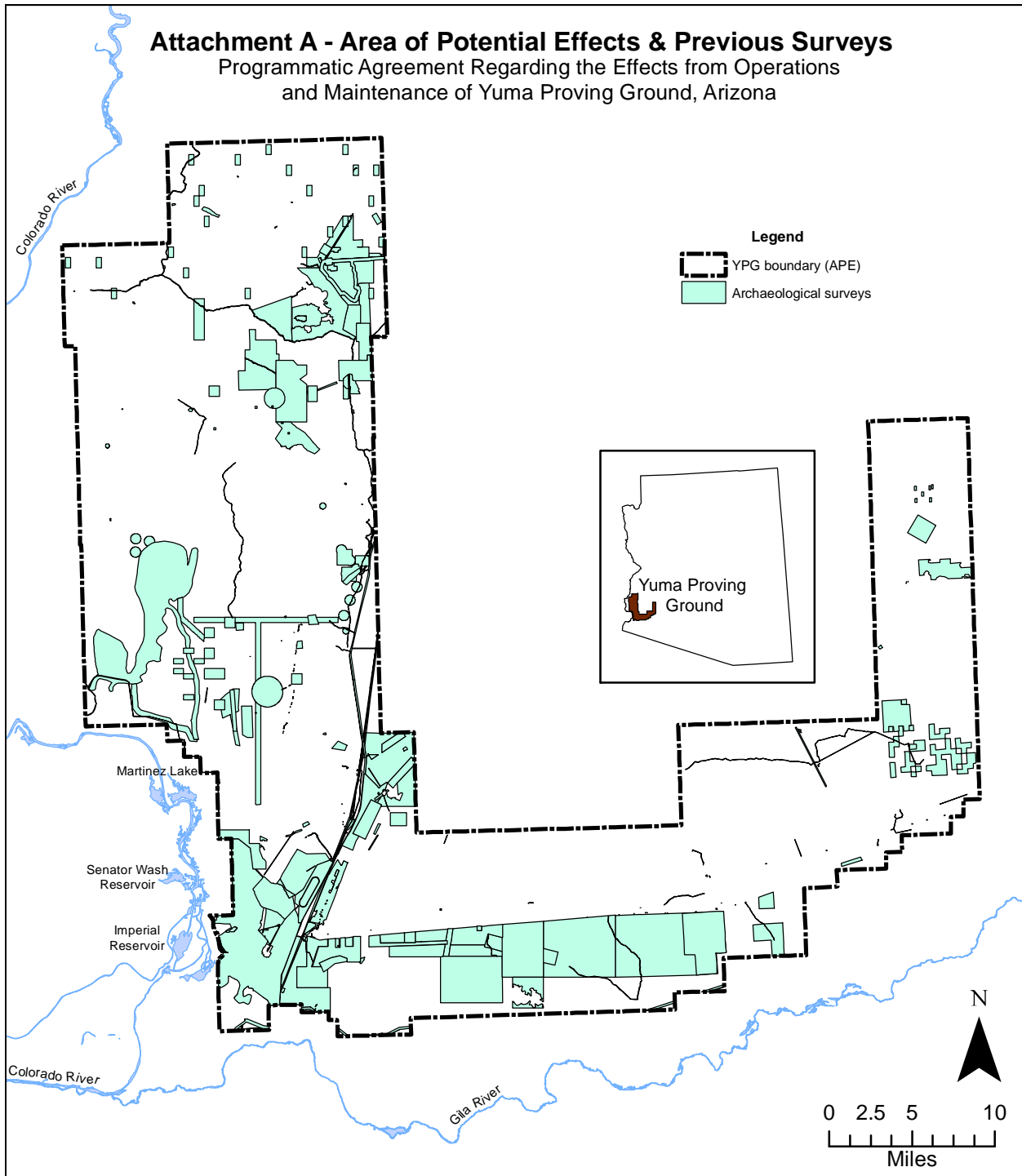
Attachment D – Current map of impact areas, other contaminated areas, and previously disturbed areas at YPG

Attachment E – Exempt Undertakings

Attachment F – Inadvertent Discovery of Archaeological Deposits Standard Operating Procedure

Attachment A - Area of Potential Effects & Previous Surveys

Programmatic Agreement Regarding the Effects from Operations and Maintenance of Yuma Proving Ground, Arizona



Yuma Proving Ground List of Identified Historic Properties

Site Number	Era*	Primary Site Type
AZ R:11:108(ASM)	P	Rock Cluster
AZ R:11:123(ASM)	P	Trail Segment
AZ R:11:124(ASM)	P	Rock Alignment
AZ R:11:125(ASM)	P	Rock Ring
AZ R:11:134(ASM)	P	Trail Segment
AZ R:11:137(ASM)	P	Trail Segment
AZ R:11:138(ASM)	P	Lithic Scatter
AZ R:11:139(ASM)	P	Cleared Area
AZ R:11:178(ASM)	P	Ceramic Scatter
AZ R:11:184(ASM)	P	Trail Segment
AZ R:11:193(ASM)	P	Trail Segment
AZ R:11:2(ASM)	P	Quarry
AZ R:11:3(ASM)	P	Lithic Scatter
AZ R:11:33(ASM)	P	Lithic Scatter
AZ R:11:36(ASM)	P	Lithic Scatter
AZ R:11:37(ASM)	P	Rock Ring
AZ R:11:38(ASM)	P	Rock Ring
AZ R:11:39(ASM)	P	Rock Ring
AZ R:11:4(ASM)	P	Lithic Scatter
AZ R:11:40(ASM)	P	Lithic Scatter
AZ R:11:41(ASM)	P	Rock Alignment
AZ R:11:42(ASM)	P	Lithic Scatter
AZ R:11:43(ASM)	P	Lithic Scatter
AZ R:11:45(ASM)	P	Lithic Scatter
AZ R:11:46(ASM)	P	Lithic Scatter
AZ R:11:47(ASM)	P	Lithic Scatter
AZ R:11:48(ASM)	P	Lithic Scatter
AZ R:11:49(ASM)	P	Ceramic Scatter
AZ R:11:5(ASM)	P	Lithic Scatter
AZ R:11:50(ASM)	P	Lithic Scatter
AZ R:11:51(ASM)	P	Lithic Scatter
AZ R:11:52(ASM)	P	Lithic Scatter
AZ R:11:53(ASM)	P	Lithic, Ceramic Scatter
AZ R:11:54(ASM)	P	Lithic Scatter
AZ R:11:55(ASM)	P	Lithic, Ceramic Scatter
AZ R:11:56(ASM)	P	Lithic, Ceramic Scatter
AZ R:11:57(ASM)	P	Lithic Scatter
AZ R:11:58(ASM)	P	Lithic Scatter
AZ R:11:59(ASM)	P	Rock Ring
AZ R:11:6(ASM)	P	Lithic Scatter
AZ R:11:60(ASM)	P	Rock Ring
AZ R:11:61(ASM)	P	Rock Ring
AZ R:11:62(ASM)	P	Trail Segment
AZ R:11:7(ASM)	P	Lithic Scatter
AZ R:11:8(ASM)	P	Lithic Scatter
AZ R:11:81(ASM)	P	Cleared Area, Rock Ring, Rock Cairn
AZ R:11:82(ASM)	P	Trail Segment
AZ R:11:83(ASM)	P	Rock Ring
AZ R:11:87(ASM)	P	Rockshelter
AZ R:11:88(ASM)	H/P	Cleared Area
AZ R:11:89(ASM)	P	Trail Segment
AZ R:11:91(ASM)	P	Rock Ring
AZ R:11:92(ASM)	H/P	Rockshelter
AZ R:11:93(ASM)	P	Rockshelter
AZ R:11:94(ASM)	P	Lithic Scatter
AZ R:11:95(ASM)	P	Rockshelter
AZ R:14:100(ASM)	P	Cleared Areas, Rock Clusters
AZ R:14:101(ASM)	P	Cleared Areas, Rock Clusters
AZ R:14:102(ASM)	P	Cleared Areas, Compressed Gravel Areas
AZ R:14:103(ASM)	P	Cleared Areas, Rock Rings,

Site Number	Era*	Primary Site Type
		Alignments, Clusters
AZ R:14:106(ASM)	P	Cleared Areas
AZ R:14:107(ASM)	P	Cleared Areas, Compressed Gravel Areas
AZ R:14:108(ASM)	P	Cleared Areas
AZ R:14:109(ASM)	P	Cleared Areas
AZ R:14:110(ASM)	P	Cleared Areas
AZ R:14:111(ASM)	P	Cleared Areas
AZ R:14:112(ASM)	P	Cleared Areas, Rock Clusters
AZ R:14:113(ASM)	P	Lithic and Ceramic Scatter
AZ R:14:114(ASM)	P	Cleared Area
AZ R:14:115(ASM)	P	Rock Rings
AZ R:14:116(ASM)	P	Cleared Area
AZ R:14:117(ASM)	P	Cleared Areas
AZ R:14:118(ASM)	P	Cleared Areas
AZ R:14:119(ASM)	P	Cleared Area
AZ R:14:120(ASM)	P	Cleared Areas
AZ R:14:121(ASM)	P	Rock Clusters
AZ R:14:122(ASM)	P	Rock Ring
AZ R:14:123(ASM)	P	Rock Ring
AZ R:14:124(ASM)	P	Cleared Areas with Rock Clusters
AZ R:14:125(ASM)	P	Cleared Area
AZ R:14:126(ASM)	P	Rock Ring
AZ R:14:127(ASM)	P	Cleared Area
AZ R:14:128(ASM)	P	Rock Ring
AZ R:14:129(ASM)	P	Rock Clusters
AZ R:14:130(ASM)	P	Cleared Area
AZ R:14:131(ASM)	P	Rock Ring
AZ R:14:132(ASM)	P	Rock Clusters
AZ R:14:133(ASM)	P	Rock Ring
AZ R:14:134(ASM)	P	Cleared Area
AZ R:14:135(ASM)	P	Rock Ring
AZ R:14:136(ASM)	P	Rock Ring
AZ R:14:137(ASM)	P	Cleared Areas
AZ R:14:138(ASM)	P	Rock Rings
AZ R:14:139(ASM)	P	Cleared Areas
AZ R:14:140(ASM)	P	Rock Ring
AZ R:14:141(ASM)	P	Rock Ring
AZ R:14:144(ASM)	P	Cleared Areas
AZ R:14:145(ASM)	P	Cleared Area
AZ R:14:146(ASM)	P	Rock Ring
AZ R:14:147(ASM)	P	Cleared Area
AZ R:14:148(ASM)	P	Rock Rings
AZ R:14:149(ASM)	P	Rock Ring
AZ R:14:150(ASM)	P	Cleared Areas
AZ R:14:151(ASM)	P	Possible Cleared Area (impact crater?)
AZ R:14:152(ASM)	P	Rock Ring
AZ R:14:153(ASM)	P	Cleared Areas
AZ R:14:154(ASM)	P	Cleared Area
AZ R:14:155(ASM)	P	Cleared Area
AZ R:14:156(ASM)	P	Cleared Area
AZ R:14:157(ASM)	P	Cleared Areas
AZ R:14:158(ASM)	P	Rock Alignments
AZ R:14:159(ASM)	P	Cleared Area
AZ R:14:160(ASM)	P	Cleared Area
AZ R:14:161(ASM)	P	Cleared Area
AZ R:14:162(ASM)	P	Cleared Areas
AZ R:14:163(ASM)	P	Rock Ring, Rock Clusters
AZ R:14:164(ASM)	P	Rock Clusters
AZ R:14:165(ASM)	P	Rock Cluster
AZ R:14:166(ASM)	P	Rock Ring

- Era: P = Prehistoric; H = Historic; H/P = Historic/Prehistoric (i.e., multicomponent)

Yuma Proving Ground List of Identified Historic Properties

Site Number	Era*	Primary Site Type
AZ R:14:167(ASM)	P	Cleared Area
AZ R:14:168(ASM)	P	Cleared Area
AZ R:14:169(ASM)	P	Rock Rings
AZ R:14:170(ASM)	P	Rock Alignments
AZ R:14:171(ASM)	P	Rock Ring
AZ R:14:172(ASM)	P	Cleared Areas
AZ R:14:173(ASM)	P	Rock Ring
AZ R:14:174(ASM)	P	Rock Ring
AZ R:14:175(ASM)	P	Rock Ring
AZ R:14:176(ASM)	P	Rock Ring
AZ R:14:177(ASM)	P	Cleared Areas
AZ R:14:178(ASM)	P	Cleared Area
AZ R:14:179(ASM)	P	Cleared Areas
AZ R:14:180(ASM)	P	Rock Cluster
AZ R:14:181(ASM)	P	Rock Ring
AZ R:14:182(ASM)	P	Rock Cluster
AZ R:14:183(ASM)	P	Rock Ring
AZ R:14:184(ASM)	P	Rock Ring
AZ R:14:185(ASM)	P	Cleared Area
AZ R:14:186(ASM)	P	Rock Cluster
AZ R:14:187(ASM)	P	Rock Clusters
AZ R:14:188(ASM)	P	Rock Ring
AZ R:14:189(ASM)	P	Rock Ring
AZ R:14:190(ASM)	P	Rock Ring
AZ R:14:191(ASM)	P	Cleared Area
AZ R:14:192(ASM)	P	Rock Ring, Rock Clusters
AZ R:14:193(ASM)	P	Cleared Area
AZ R:14:194(ASM)	P	Rock Cluster
AZ R:14:195(ASM)	P	Cleared Areas
AZ R:14:196(ASM)	P	Cleared Area
AZ R:14:197(ASM)	P	Cleared Area
AZ R:14:198(ASM)	P	Cleared Areas
AZ R:14:199(ASM)	P	Cleared Areas
AZ R:14:20(ASM)	P	Cleared Area
AZ R:14:200(ASM)	P	Cleared Area
AZ R:14:201(ASM)	P	Cleared Areas
AZ R:14:202(ASM)	P	Cleared Area
AZ R:14:203(ASM)	P	Cleared Areas
AZ R:14:204(ASM)	P	Rock Ring
AZ R:14:205(ASM)	P	Cleared Areas
AZ R:14:206(ASM)	P	Cleared Area
AZ R:14:207(ASM)	P	Cleared Area
AZ R:14:208(ASM)	P	Rock Ring
AZ R:14:209(ASM)	P	Cleared Areas
AZ R:14:21(ASM)	P	Lithic Scatter
AZ R:14:210(ASM)	P	Cleared Areas
AZ R:14:211(ASM)	P	Rock Ring
AZ R:14:212(ASM)	P	Cleared Area
AZ R:14:213(ASM)	P	Rock Ring
AZ R:14:214(ASM)	P	Cleared Area
AZ R:14:215(ASM)	P	Cleared Area
AZ R:14:216(ASM)	P	Rock Ring
AZ R:14:217(ASM)	P	Cleared Area
AZ R:14:218(ASM)	P	Cleared Areas
AZ R:14:219(ASM)	P	Lithic Scatter
AZ R:14:22(ASM)	P	Cleared Area
AZ R:14:220(ASM)	P	Lithic Scatter
AZ R:14:221(ASM)	P	Cleared Area
AZ R:14:222(ASM)	P	Cleared Area
AZ R:14:223(ASM)	P	Cleared Area
AZ R:14:224(ASM)	P	Cleared Area
AZ R:14:225(ASM)	P	Rock Ring
AZ R:14:226(ASM)	P	Cleared Area, Compressed Gravel Area

Site Number	Era*	Primary Site Type
AZ R:14:227(ASM)	P	Rock Alignment
AZ R:14:228(ASM)	P	Rock Cluster
AZ R:14:229(ASM)	P	Rock Cluster
AZ R:14:23(ASM)	P	Cleared Area, Compressed Gravel Area
AZ R:14:230(ASM)	P	Cleared Area
AZ R:14:231(ASM)	P	Cleared Area
AZ R:14:232(ASM)	P	Rock Ring
AZ R:14:233(ASM)	P	Rock Alignment
AZ R:14:234(ASM)	P	Cleared Area
AZ R:14:235(ASM)	P	Cleared Area
AZ R:14:236(ASM)	P	Rock Ring
AZ R:14:237(ASM)	P	Cleared Area/Compressed Gravel Area
AZ R:14:238(ASM)	P	Rock Cluster
AZ R:14:239(ASM)	P	Cleared Area
AZ R:14:24(ASM)	P	Cleared Area
AZ R:14:240(ASM)	P	Rock Cluster
AZ R:14:241(ASM)	P	Cleared Area
AZ R:14:242(ASM)	P	Cleared Area
AZ R:14:243(ASM)	P	Cleared Area
AZ R:14:244(ASM)	P	Rock Ring
AZ R:14:245(ASM)	P	Rock Ring
AZ R:14:246(ASM)	P	Cleared Area
AZ R:14:247(ASM)	P	Rock Ring
AZ R:14:248(ASM)	P	Rock Cluster
AZ R:14:249(ASM)	P	Rock Ring
AZ R:14:25(ASM)	P	Cleared Area
AZ R:14:250(ASM)	P	Rock Cluster
AZ R:14:257(ASM)	P	Trail Segment
AZ R:14:26(ASM)	P	Cleared Area
AZ R:14:27(ASM)	P	Cleared Area
AZ R:14:28(ASM)	P	Cleared Areas
AZ R:14:29(ASM)	P	Rock Ring
AZ R:14:30(ASM)	P	Rock Ring, Rock Cluster, Cleared Area
AZ R:14:31(ASM)	P	Cleared Area
AZ R:14:32(ASM)	P	Cleared Area
AZ R:14:33(ASM)	P	Cleared Area
AZ R:14:34(ASM)	P	Cleared Area
AZ R:14:35(ASM)	P	Cleared Area
AZ R:14:36(ASM)	P	Cleared Areas
AZ R:14:37(ASM)	P	Cleared Areas
AZ R:14:38(ASM)	P	Cleared Areas
AZ R:14:39(ASM)	P	Cairn, Rock Clusters, Cleared Areas
AZ R:14:40(ASM)	P	Cleared Areas
AZ R:14:41(ASM)	P	Rock Rings, Rock Clusters
AZ R:14:42(ASM)	P	Cleared Areas
AZ R:14:43(ASM)	P	Cleared Areas
AZ R:14:44(ASM)	P	Cleared Area
AZ R:14:45(ASM)	P	Cleared Area
AZ R:14:46(ASM)	P	Cleared Areas
AZ R:14:47(ASM)	P	Cleared Areas
AZ R:14:48(ASM)	P	Cleared Area
AZ R:14:49(ASM)	P	Rock Cairn
AZ R:14:50(ASM)	P	Rock Pile, Cleared Areas
AZ R:14:51(ASM)	P	Cleared Area
AZ R:14:52(ASM)	P	Cleared Areas
AZ R:14:53(ASM)	P	Cleared Areas, Rock Cluster
AZ R:14:54(ASM)	P	Cleared Areas, Rock Clusters
AZ R:14:55(ASM)	P	Trail Segment
AZ R:14:56(ASM)	P	Cleared Areas, Rock Ring

- Era: P = Prehistoric; H = Historic; H/P = Historic/Prehistoric (i.e., multicomponent)

Yuma Proving Ground List of Identified Historic Properties

Site Number	Era*	Primary Site Type
AZ R:14:57(ASM)	P	Cleared Areas, Compressed Gravel Area, Rock Rings
AZ R:14:58(ASM)	P	Cleared Areas
AZ R:14:59(ASM)	P	Cleared Areas, Rock Rings, Rock Cairn
AZ R:14:60(ASM)	P	Cleared Areas
AZ R:14:61(ASM)	P	Cleared Areas
AZ R:14:62(ASM)	P	Cleared Areas
AZ R:14:63(ASM)	P	Cleared Areas
AZ R:14:64(ASM)	P	Cleared Areas, Compressed Gravel Areas
AZ R:14:65(ASM)	P	Cleared Areas
AZ R:14:66(ASM)	P	Cleared Areas
AZ R:14:67(ASM)	P	Cleared Areas, Rock Rings, Compressed Gravel Area
AZ R:14:68(ASM)	P	Cleared Areas, Rock Rings
AZ R:14:69(ASM)	P	Cleared Areas
AZ R:14:70(ASM)	P	Cleared Areas
AZ R:14:71(ASM)	P	Cleared Areas, Compressed Gravel Areas
AZ R:14:72(ASM)	H/P	Cleared Areas, Rock Ring, Rock Clusters
AZ R:14:73(ASM)	P	Cleared Areas, Compressed Gravel Areas
AZ R:14:74(ASM)	P	Rock Rings, Compressed Gravel Areas, Cleared Area
AZ R:14:75(ASM)	P	Cleared Areas, Rock Ring?
AZ R:14:76(ASM)	P	Cleared Areas, Rock Rings, Compressed Gravel Areas
AZ R:14:77(ASM)	P	Cleared Areas, Rock Rings, Clusters
AZ R:14:78(ASM)	P	Cleared Area/Compressed Gravel Area
AZ R:14:79(ASM)	P	Cleared Areas, Rock Clusters
AZ R:14:80(ASM)	P	Rock Rings, Rock Clusters, Compressed Gravel Areas
AZ R:14:81(ASM)	H/P	Cleared Areas, Compressed Gravel Areas, Rock Ring
AZ R:14:82(ASM)	P	Rock Ring
AZ R:14:83(ASM)	P	Cleared Areas, with Rock Clusters
AZ R:14:84(ASM)	P	Lithic Scatter
AZ R:14:85(ASM)	P	Cleared Areas
AZ R:14:86(ASM)	P	Cleared Areas
AZ R:14:87(ASM)	P	Cleared Areas
AZ R:14:88(ASM)	P	Trail Segment
AZ R:14:89(ASM)	P	Rock Ring/Clusters
AZ R:14:90(ASM)	P	Cleared Areas
AZ R:14:91(ASM)	P	Lithic Scatter
AZ R:14:92(ASM)	P	Lithic Scatter
AZ R:14:93(ASM)	P	Cleared Areas
AZ R:14:94(ASM)	P	Cleared Areas
AZ R:14:96(ASM)	P	Cleared Areas, Rock Clusters, Rock Cairn
AZ R:14:97(ASM)	P	Cleared Areas
AZ R:14:98(ASM)	P	Cleared Areas, Rock Clusters
AZ R:14:99(ASM)	P	Cleared Areas, Rock Clusters
AZ R:15:1(ASM)	P	Cleared Areas
AZ R:15:100(ASM)	P	Cleared Areas
AZ R:15:101(ASM)	P	Cleared Area/Compressed Gravel Area
AZ R:15:102(ASM)	P	Rock Clusters

Site Number	Era*	Primary Site Type
AZ R:15:103(ASM)	P	Cleared Areas
AZ R:15:104(ASM)	P	Cleared Areas
AZ R:15:105(ASM)	P	Cleared Areas
AZ R:15:106(ASM)	P	Cleared Areas, Rock Rings
AZ R:15:107(ASM)	P	Rock Ring
AZ R:15:108(ASM)	P	Lithic Scatter
AZ R:15:109(ASM)	P	Compressed Gravel Areas
AZ R:15:110(ASM)	P	Lithic Scatter
AZ R:15:111(ASM)	P	Rock Ring, Rock Cluster, Rock Alignment
AZ R:15:112(ASM)	P	Lithic Scatter
AZ R:15:113(ASM)	P	Lithic Scatter
AZ R:15:114(ASM)	P	Lithic Scatter
AZ R:15:115(ASM)	P	Cleared areas, Rock Rings, Rock Clusters
AZ R:15:116(ASM)	P	Cleared Areas, Compressed Gravel Area, Rock Ring
AZ R:15:117(ASM)	P	Cleared Areas, Compressed Gravel Area
AZ R:15:118(ASM)	P	Cleared Areas
AZ R:15:119(ASM)	P	Cleared Areas, Rock Rings
AZ R:15:120(ASM)	P	Cleared Areas
AZ R:15:121(ASM)	P	Rock Rings, Rock Clusters
AZ R:15:122(ASM)	P	Cleared Areas
AZ R:15:123(ASM)	P	Cleared Areas, Compressed Gravel Area
AZ R:15:124(ASM)	P	Cleared Area
AZ R:15:125(ASM)	P	Cleared Areas
AZ R:15:126(ASM)	P	Rock Cluster
AZ R:15:127(ASM)	P	Cleared Areas
AZ R:15:128(ASM)	P	Rock Ring
AZ R:15:129(ASM)	P	Rock Ring
AZ R:15:130(ASM)	P	Rock Ring
AZ R:15:131(ASM)	P	Cleared Area
AZ R:15:132(ASM)	P	Cleared Area
AZ R:15:133(ASM)	P	Cleared Area
AZ R:15:134(ASM)	P	Rock Ring
AZ R:15:135(ASM)	P	Cleared Area
AZ R:15:136(ASM)	P	Cleared Area
AZ R:15:137(ASM)	P	Rock Ring
AZ R:15:138(ASM)	P	Cleared Area
AZ R:15:139(ASM)	P	Rock Cluster
AZ R:15:140(ASM)	P	Rock Ring
AZ R:15:141(ASM)	P	Cleared Area
AZ R:15:142(ASM)	P	Rock Ring
AZ R:15:143(ASM)	P	Rock Cluster
AZ R:15:144(ASM)	P	Rock Cluster
AZ R:15:145(ASM)	P	Cleared Area
AZ R:15:146(ASM)	P	Cleared Area
AZ R:15:147(ASM)	P	Rock Cluster
AZ R:15:148(ASM)	P	Rock Cluster
AZ R:15:149(ASM)	P	Cleared Area
AZ R:15:150(ASM)	P	Rock Ring
AZ R:15:151(ASM)	P	Cleared Area
AZ R:15:152(ASM)	P	Cleared Area
AZ R:15:153(ASM)	P	Rock Ring
AZ R:15:154(ASM)	P	Rock Ring
AZ R:15:155(ASM)	P	Rock Ring
AZ R:15:156(ASM)	P	Rock Ring
AZ R:15:157(ASM)	P	Rock Ring
AZ R:15:158(ASM)	P	Cleared Area
AZ R:15:159(ASM)	P	Cleared Area
AZ R:15:160(ASM)	P	Rock Cluster
AZ R:15:161(ASM)	P	Rock Ring

• Era: P = Prehistoric; H = Historic; H/P = Historic/Prehistoric (i.e., multicomponent)

Yuma Proving Ground List of Identified Historic Properties

Site Number	Era*	Primary Site Type
AZ R:15:162(ASM)	P	Rock Ring
AZ R:15:163(ASM)	P	Cleared Area
AZ R:15:164(ASM)	P	Rock Ring
AZ R:15:165(ASM)	P	Rock Ring
AZ R:15:166(ASM)	P	Rock Cluster
AZ R:15:167(ASM)	P	Rock Cluster
AZ R:15:168(ASM)	P	Rock Cluster
AZ R:15:169(ASM)	P	Rock Ring
AZ R:15:170(ASM)	P	Rock Cluster
AZ R:15:171(ASM)	P	Rock Ring
AZ R:15:172(ASM)	P	Rock Cluster
AZ R:15:173(ASM)	P	Rock Ring
AZ R:15:174(ASM)	P	Rock Clusters
AZ R:15:175(ASM)	P	Cleared Area
AZ R:15:176(ASM)	P	Rock Clusters
AZ R:15:177(ASM)	P	Rock Rings
AZ R:15:178(ASM)	P	Rock Clusters
AZ R:15:179(ASM)	P	Rock Clusters
AZ R:15:180(ASM)	P	Rock Ring
AZ R:15:181(ASM)	P	Rock Ring
AZ R:15:182(ASM)	P	Cleared Area
AZ R:15:183(ASM)	P	Rock Ring
AZ R:15:184(ASM)	P	Cleared Area
AZ R:15:185(ASM)	P	Rock Ring
AZ R:15:186(ASM)	P	Cleared Area
AZ R:15:187(ASM)	P	Cleared Area
AZ R:15:188(ASM)	P	Cleared Area
AZ R:15:189(ASM)	P	Rock Ring
AZ R:15:190(ASM)	P	Cleared Area
AZ R:15:191(ASM)	P	Rock Cluster
AZ R:15:192(ASM)	P	Rock Ring
AZ R:15:193(ASM)	P	Cleared Area
AZ R:15:194(ASM)	P	Cleared Area
AZ R:15:195(ASM)	P	Cleared Area
AZ R:15:196(ASM)	P	Rock Cluster
AZ R:15:197(ASM)	P	Rock Cluster
AZ R:15:198(ASM)	P	Rock Cluster
AZ R:15:199(ASM)	P	Cleared Area
AZ R:15:2(ASM)	P	Trail Segment
AZ R:15:200(ASM)	P	Rock Ring
AZ R:15:201(ASM)	P	Rock Ring
AZ R:15:202(ASM)	P	Rock Ring
AZ R:15:203(ASM)	P	Rock Cluster
AZ R:15:204(ASM)	P	Rock Ring
AZ R:15:205(ASM)	P	Rock Ring
AZ R:15:206(ASM)	P	Rock Ring
AZ R:15:207(ASM)	P	Rock Ring
AZ R:15:208(ASM)	P	Cleared Area
AZ R:15:209(ASM)	P	Cleared Area
AZ R:15:210(ASM)	P	Rock Cluster
AZ R:15:211(ASM)	P	Cleared Area
AZ R:15:212(ASM)	P	Cleared Areas
AZ R:15:213(ASM)	P	Rock Cluster
AZ R:15:214(ASM)	P	Rock Cluster
AZ R:15:215(ASM)	P	Rock Ring
AZ R:15:216(ASM)	P	Cleared Area
AZ R:15:217(ASM)	P	Cleared Area, Rock Ring
AZ R:15:220(ASM)	P	Lithic Scatter
AZ R:15:221(ASM)	P	Rock Ring
AZ R:15:222(ASM)	H	Rock Alignment
AZ R:15:223(ASM)	P	Rock Alignment
AZ R:15:224(ASM)	P	Lithic Scatter
AZ R:15:225(ASM)	P	Trail Segment
AZ R:15:252(ASM)	P	Cleared Area

Site Number	Era*	Primary Site Type
AZ R:15:258(ASM)	P	Rock Ring
AZ R:15:262(ASM)	P	Cleared Areas with Rock Clusters
AZ R:15:263(ASM)	P	Rock Cluster
AZ R:15:264(ASM)	P	Rock Ring
AZ R:15:265(ASM)	P	Rock Ring
AZ R:15:266(ASM)	P	Cleared Area
AZ R:15:285(ASM)	P	Rock Rings, Lithics
AZ R:15:3(ASM)	P	Trail Segment
AZ R:15:4(ASM)	P	Trail Segment
AZ R:15:5(ASM)	P	Trail Segment
AZ R:15:6(ASM)	P	Trail Segment
AZ R:15:7(ASM)	P	Trail Segment
AZ R:15:97(ASM)	P	Rock Ring, Rock Cluster
AZ R:15:98(ASM)	P	Cleared Area, Compressed Gravel Area
AZ R:15:99(ASM)	P	Rock Rings
AZ S:14:10(ASM)	P	Lithic Scatter
AZ S:14:11(ASM)	P	Lithic Scatter
AZ S:14:12(ASM)	P	Cleared Area
AZ S:14:13(ASM)	P	Lithic Scatter
AZ S:14:14(ASM)	P	Lithic Scatter
AZ S:14:15(ASM)	P	Lithic Scatter
AZ S:14:16(ASM)	P	Quarry
AZ S:14:17(ASM)	P	Quarry
AZ S:14:18(ASM)	P	Lithic Scatter
AZ S:14:19(ASM)	P	Rock shelter
AZ S:14:20(ASM)	P	Lithic Scatter
AZ S:14:21(ASM)	P	Lithic Scatter
AZ S:14:22(ASM)	P	Lithic Scatter
AZ S:14:23(ASM)	P	Lithic Scatter
AZ S:14:24(ASM)	P	Rock Cluster/Pile
AZ S:14:25(ASM)	P	Rock shelter
AZ S:14:26(ASM)	P	Lithic Scatter
AZ S:14:27(ASM)	P	Lithic Scatter
AZ S:14:28(ASM)	P	Lithic Scatter
AZ S:14:29(ASM)	P	Rock shelter
AZ S:14:30(ASM)	P	Lithic Scatter
AZ S:14:31(ASM)	P	Rock shelter
AZ S:14:32(ASM)	P	Rock Cairns
AZ S:14:33(ASM)	P	Rock Alignment
AZ S:14:34(ASM)	P	Quarry
AZ S:14:35(ASM)	P	Quarry
AZ S:14:36(ASM)	P	Lithic and Ceramic Scatter
AZ S:14:37(ASM)	P	Lithic Scatter
AZ S:14:38(ASM)	P	Quarry
AZ S:14:39(ASM)	P	Lithic Scatter
AZ S:14:40(ASM)	P	Lithic Scatter
AZ S:14:41(ASM)	P	Lithic Scatter
AZ S:14:42(ASM)	P	Rock shelter
AZ S:14:43(ASM)	P	Rock shelter
AZ S:14:44(ASM)	P	Rock shelter
AZ S:14:45(ASM)	P	Rock shelter
AZ S:14:46(ASM)	P	Rock shelter
AZ S:14:47(ASM)	P	Rockshelter
AZ S:14:48(ASM)	P	Rockshelter
AZ S:14:49(ASM)	P	Lithic and Ceramic Scatter
AZ S:14:50(ASM)	P	Quarry
AZ S:14:51(ASM)	P	Lithic Scatter
AZ S:14:52(ASM)	H	Historic Malcolm Rogers Camp Complex
AZ S:14:53(ASM)	P	Rock Ring
AZ S:14:54(ASM)	P	Rock Ring
AZ S:14:55(ASM)	P	Trail Segment

* Era: P = Prehistoric; H = Historic; H/P = Historic/Prehistoric (i.e., multicomponent)

Yuma Proving Ground List of Identified Historic Properties

Site Number	Era*	Primary Site Type
AZ S:14:57(ASM)	H	Military Camp
AZ S:14:62(ASM)	P	Lithic Scatter
AZ S:14:63(ASM)	P	Petroglyph
AZ S:14:66(ASM)	P	Rock Cairn
AZ S:14:67(ASM)	P	Lithic Scatter
AZ S:14:70(ASM)	P	Lithic Scatter
AZ S:14:71(ASM)	P	Lithic Scatter
AZ S:14:72(ASM)	P	Petroglyph
AZ S:14:73(ASM)	P	Trail Segment
AZ X:3:100(ASM)	P	Cleared Area
AZ X:3:101(ASM)	P	Rock Cluster
AZ X:3:102(ASM)	P	Rock Cluster
AZ X:3:103(ASM)	P	Cleared Area
AZ X:3:104(ASM)	P	Cleared Area
AZ X:3:105(ASM)	P	Cleared Area
AZ X:3:106(ASM)	P	Rock Cluster
AZ X:3:107(ASM)	P	Cleared Area
AZ X:3:108(ASM)	P	Cleared Area
AZ X:3:109(ASM)	P	Cleared Area
AZ X:3:110(ASM)	P	Cleared Area
AZ X:3:346(ASM)	P	Cleared Area
AZ X:3:368(ASM)	H	Military Camp
AZ X:3:368(ASM)	H	Military Camp
AZ X:3:371(ASM)	H	Road, State Route 95
AZ X:3:385(ASM)	P	Lithic Scatter
AZ X:3:401(ASM)	P	Lithic, Ceramic Scatter
AZ X:3:402(ASM)	P	Lithic Scatter
AZ X:3:403(ASM)	P	Lithic Scatter
AZ X:3:404(ASM)	P	Lithic Scatter
AZ X:3:405(ASM)	P	Lithic Scatter
AZ X:3:406(ASM)	P	Lithic Scatter
AZ X:3:407(ASM)	P	Lithic Scatter
AZ X:3:471(ASM)	P	Lithic Scatter
AZ X:3:473(ASM)	P	Lithic Scatter
AZ X:3:489(ASM)	P	Cleared Area
AZ X:3:496(ASM)	P	Lithic Scatter
AZ X:3:529(ASM)	P	Quarry
AZ X:3:53(ASM)	P	Cleared Area
AZ X:3:54(ASM)	P	Cleared Area
AZ X:3:55(ASM)	P	Cleared Area
AZ X:3:87(ASM)	P	Cleared Area
AZ X:3:88(ASM)	P	Cleared Area
AZ X:3:90(ASM)	P	Cleared Area
AZ X:3:91(ASM)	P	Cleared Area
AZ X:3:92(ASM)	P	Cleared Area
AZ X:3:93(ASM)	P	Cleared Area
AZ X:3:94(ASM)	P	Cleared Area
AZ X:3:95(ASM)	P	Cleared Area
AZ X:3:96(ASM)	P	Cleared Area
AZ X:3:97(ASM)	P	Cleared Area
AZ X:3:98(ASM)	P	Cleared Area
AZ X:4:106(ASM)	P	Lithic Scatter
AZ X:4:107(ASM)	P	Lithic Scatter
AZ X:4:108(ASM)	P	Cleared Area
AZ X:4:109(ASM)	P	Lithic and Ceramic Scatter
AZ X:4:110(ASM)	P	Cleared Area
AZ X:4:111(ASM)	P	Lithic Scatter
AZ X:4:112(ASM)	P	Lithic and Ceramic Scatter
AZ X:4:113(ASM)	P	Rock Ring
AZ X:4:114(ASM)	P	Cleared Area
AZ X:4:115(ASM)	P	Rock Cairn
AZ X:4:116(ASM)	P	Lithic Scatter
AZ X:4:117(ASM)	P	Cleared Area
AZ X:4:118(ASM)	P	Cleared Area

Site Number	Era*	Primary Site Type
AZ X:4:119(ASM)	P	Lithic Scatter
AZ X:4:121(ASM)	P	cobble Cluster
AZ X:4:122(ASM)	P	Rock Ring
AZ X:4:123(ASM)	P	Lithic Scatter
AZ X:4:124(ASM)	P	Cleared Area
AZ X:4:125(ASM)	P	Lithic Scatter
AZ X:4:126(ASM)	P	Cleared Area
AZ X:4:127(ASM)	P	Cleared Area
AZ X:4:128(ASM)	P	Lithic Scatter
AZ X:4:129(ASM)	P	Lithic Scatter
AZ X:4:130(ASM)	P	Lithic Scatter
AZ X:4:131(ASM)	P	Cleared Area
AZ X:4:132(ASM)	P	Lithic Scatter
AZ X:4:133(ASM)	P	Lithic Scatter
AZ X:4:134(ASM)	P	Lithic Scatter
AZ X:4:135(ASM)	P	Lithic Scatter
AZ X:4:136(ASM)	P	Cleared Area
AZ X:4:137(ASM)	P	Lithic Scatter
AZ X:4:138(ASM)	P	Lithic Scatter
AZ X:4:139(ASM)	P	Lithic Scatter
AZ X:4:140(ASM)	P	Cleared Area
AZ X:4:141(ASM)	P	Cleared Area
AZ X:4:142(ASM)	P	Cleared Area
AZ X:4:143(ASM)	P	Cleared Area
AZ X:4:144(ASM)	P	Cleared Area
AZ X:4:145(ASM)	P	Rock Ring, Rock Cairn
AZ X:4:146(ASM)	P	Lithic Scatter
AZ X:4:147(ASM)	P	Cleared Area
AZ X:4:149(ASM)	P	Lithic Scatter
AZ X:4:150(ASM)	P	Lithic Scatter
AZ X:4:151(ASM)	P	Lithic Scatter
AZ X:4:152(ASM)	P	Cleared Area
AZ X:4:153(ASM)	P	Rock Ring
AZ X:4:154(ASM)	P	Cleared Area
AZ X:4:155(ASM)	P	Cleared Area
AZ X:4:156(ASM)	P	Rock Ring
AZ X:4:159(ASM)	P	Lithic Scatter
AZ X:4:160(ASM)	P	Lithic Scatter
AZ X:4:161(ASM)	P	Lithic Scatter
AZ X:4:162(ASM)	P	Cleared Area
AZ X:4:163(ASM)	P	Cleared Area
AZ X:4:164(ASM)	P	Lithic Scatter
AZ X:4:165(ASM)	P	Rock Ring
AZ X:4:166(ASM)	P	Rock Ring
AZ X:4:167(ASM)	P	Rock Ring
AZ X:4:168(ASM)	P	Rock Ring
AZ X:4:169(ASM)	P	Cleared Area
AZ X:4:170(ASM)	P	Cleared Area
AZ X:4:171(ASM)	P	Cleared Area
AZ X:4:172(ASM)	P	Lithic Scatter
AZ X:4:173(ASM)	P	Ceramic Scatter
AZ X:4:174(ASM)	P	Lithic Scatter
AZ X:4:175(ASM)	P	Lithic Scatter
AZ X:4:176(ASM)	P	Rock Ring
AZ X:4:177(ASM)	P	Cleared Area
AZ X:4:178(ASM)	P	Rock Ring
AZ X:4:179(ASM)	P	Rock Ring
AZ X:4:180(ASM)	P	Lithic Scatter
AZ X:4:181(ASM)	P	Rock Ring
AZ X:4:182(ASM)	P	Lithic Scatter
AZ X:4:183(ASM)	P	Cleared Area
AZ X:4:184(ASM)	P	Lithic Scatter
AZ X:4:185(ASM)	P	Lithic Scatter
AZ X:4:186(ASM)	P	Lithic Scatter

* Era: P = Prehistoric; H = Historic; H/P = Historic/Prehistoric (i.e., multicomponent)

Yuma Proving Ground List of Identified Historic Properties

Site Number	Era*	Primary Site Type
AZ X:4:187(ASM)	P	Cleared Area
AZ X:4:188(ASM)	P	Lithic Scatter
AZ X:4:189(ASM)	P	Lithic Scatter
AZ X:4:190(ASM)	P	Lithic Scatter
AZ X:4:191(ASM)	P	Lithic Scatter
AZ X:4:192(ASM)	P	Lithic Scatter
AZ X:4:193(ASM)	P	Rock Ring
AZ X:4:194(ASM)	P	Lithic Scatter
AZ X:4:195(ASM)	P	Cleared Area
AZ X:4:196(ASM)	P	Rock Ring
AZ X:4:197(ASM)	P	Lithic Scatter
AZ X:4:198(ASM)	P	Lithic Scatter
AZ X:4:199(ASM)	P	Lithic Scatter
AZ X:4:200(ASM)	P	Rock Ring
AZ X:4:201(ASM)	P	Lithic Scatter
AZ X:4:202(ASM)	P	Rock Ring
AZ X:4:203(ASM)	P	Lithic Scatter
AZ X:4:204(ASM)	P	Rock Cluster, Rock Alignment
AZ X:4:205(ASM)	P	Lithic Scatter
AZ X:4:206(ASM)	P	Rock Ring
AZ X:4:207(ASM)	P	Rock Cairn
AZ X:4:208(ASM)	P	Lithic Scatter
AZ X:4:209(ASM)	P	Lithic Scatter
AZ X:4:210(ASM)	P	Lithic Scatter
AZ X:4:211(ASM)	P	Rock Cluster
AZ X:4:212(ASM)	P	Rock Ring
AZ X:4:213(ASM)	P	Rock Ring
AZ X:4:214(ASM)	P	Cleared Area
AZ X:4:215(ASM)	P	Rock Ring
AZ X:4:216(ASM)	H	Historic Mine with Numerous Features
AZ X:4:217(ASM)	P	Rock Ring
AZ X:4:218(ASM)	P	Cleared Area
AZ X:4:219(ASM)	P	Rock Ring
AZ X:4:220(ASM)	P	Rock Ring
AZ X:4:221(ASM)	P	Cleared Area
AZ X:4:222(ASM)	P	Lithic Scatter
AZ X:4:223(ASM)	P	Rock Cairns
AZ X:4:224(ASM)	P	Cleared Area
AZ X:4:225(ASM)	P	Cleared Area
AZ X:4:226(ASM)	P	Cleared Area
AZ X:4:227(ASM)	P	Rock Ring
AZ X:4:228(ASM)	P	Cleared Area
AZ X:4:229(ASM)	P	Cleared Area
AZ X:4:230(ASM)	P	Cleared Area
AZ X:4:231(ASM)	P	Trail Segment
AZ X:4:232(ASM)	P	Trail Segment
AZ X:4:233(ASM)	P	Trail Segment
AZ X:4:234(ASM)	P	Trail Segment
AZ X:4:235(ASM)	P	Trail Segment
AZ X:4:236(ASM)	P	Trail Segment
AZ X:4:237(ASM)	P	Trail Segment
AZ X:4:238(ASM)	P	Trail Segment
AZ X:4:239(ASM)	P	Trail Segment
AZ X:4:240(ASM)	P	Trail Segment
AZ X:4:241(ASM)	P	Trail Segment
AZ X:4:242(ASM)	P	Trail Segment
AZ X:4:243(ASM)	P	Trail Segment
AZ X:4:244(ASM)	P	Trail Segment
AZ X:4:245(ASM)	P	Trail Segment
AZ X:4:246(ASM)	P	Trail Segment
AZ X:4:247(ASM)	P	Trail Segment
AZ X:4:248(ASM)	P	Trail Segment

Site Number	Era*	Primary Site Type
AZ X:4:249(ASM)	P	Trail Segment
AZ X:4:250(ASM)	P	Trail Segment
AZ X:4:251(ASM)	P	Trail Segment
AZ X:4:252(ASM)	P	Trail Segment
AZ X:4:253(ASM)	P	Trail Segment
AZ X:4:254(ASM)	P	Trail Segment
AZ X:4:255(ASM)	P	Trail Segment
AZ X:4:256(ASM)	P	Trail Segment
AZ X:4:257(ASM)	P	Trail Segment
AZ X:4:258(ASM)	P	Trail Segment
AZ X:4:259(ASM)	P	Trail Segment
AZ X:4:260(ASM)	P	Trail Segment
AZ X:4:261(ASM)	P	Trail Segment
AZ X:4:262(ASM)	P	Trail Segment
AZ X:4:263(ASM)	P	Trail Segment
AZ X:4:264(ASM)	P	Trail Segment
AZ X:4:265(ASM)	P	Trail Segment
AZ X:4:266(ASM)	P	Rock Cluster
AZ X:4:267(ASM)	P	Lithic Scatter
AZ X:4:268(ASM)	P	Lithic Scatter
AZ X:4:269(ASM)	P	Lithic Scatter
AZ X:4:275(ASM)	P	Lithic Scatter
AZ X:4:276(ASM)	P	Rock Ring
AZ X:4:277(ASM)	P	Lithic Scatter
AZ X:4:278(ASM)	P	Lithic Scatter
AZ X:4:279(ASM)	P	Lithic Scatter
AZ X:4:280(ASM)	P	Lithic Scatter
AZ X:4:281(ASM)	P	Lithic Scatter
AZ X:4:282(ASM)	P	Rock Ring
AZ X:4:283(ASM)	P	Lithic Scatter
AZ X:4:284(ASM)	P	Rock Ring
AZ X:4:285(ASM)	P	Lithic Scatter
AZ X:4:286(ASM)	P	Rock Ring
AZ X:4:287(ASM)	P	Lithic Scatter
AZ X:4:288(ASM)	P	Lithic Scatter
AZ X:4:289(ASM)	P	Lithic Scatter
AZ X:4:290(ASM)	P	Lithic Scatter
AZ X:4:291(ASM)	P	Lithic Scatter
AZ X:4:292(ASM)	P	Rock Ring
AZ X:4:293(ASM)	P	Lithic Scatter
AZ X:4:294(ASM)	P	Lithic Scatter
AZ X:4:295(ASM)	P	Lithic Scatter
AZ X:4:297(ASM)	P	Lithic Scatter
AZ X:4:298(ASM)	P	Rock Alignment/Rock Cluster
AZ X:4:299(ASM)	P	Rock Ring
AZ X:4:300(ASM)	P	Lithic Scatter
AZ X:4:301(ASM)	P	Lithic Scatter
AZ X:4:302(ASM)	P	Lithic Scatter
AZ X:4:303(ASM)	P	Lithic Scatter
AZ X:4:304(ASM)	P	Lithic Scatter
AZ X:4:305(ASM)	P	Lithic Scatter
AZ X:4:306(ASM)	P	Lithic Scatter
AZ X:4:307(ASM)	P	Lithic Scatter
AZ X:4:308(ASM)	P	Lithic Scatter
AZ X:4:309(ASM)	P	Lithic Scatter
AZ X:4:310(ASM)	P	Lithic Scatter
AZ X:4:311(ASM)	P	Lithic Scatter
AZ X:4:312(ASM)	P	Lithic Scatter
AZ X:4:313(ASM)	P	Rock Ring
AZ X:4:314(ASM)	P	Lithic Scatter
AZ X:4:315(ASM)	P	Lithic Scatter
AZ X:4:316(ASM)	P	Lithic Scatter
AZ X:4:317(ASM)	P	Lithic Scatter

* Era: P = Prehistoric; H = Historic; H/P = Historic/Prehistoric (i.e., multicomponent)

Yuma Proving Ground List of Identified Historic Properties

Site Number	Era*	Primary Site Type
AZ X:4:318(ASM)	P	Trail Segment
AZ X:4:320(ASM)	P	Lithic Scatter
AZ X:4:321(ASM)	P	Lithic Scatter
AZ X:4:322(ASM)	P	Lithic Scatter
AZ X:4:323(ASM)	P	Lithic Scatter
AZ X:4:324(ASM)	P	Lithic Scatter
AZ X:4:325(ASM)	P	Lithic Scatter
AZ X:4:326(ASM)	P	Lithic Scatter
AZ X:4:327(ASM)	P	Lithic Scatter
AZ X:4:328(ASM)	P	Lithic Scatter
AZ X:4:329(ASM)	P	Lithic Scatter
AZ X:4:330(ASM)	P	Lithic Scatter
AZ X:4:331(ASM)	P	Lithic Scatter
AZ X:4:332(ASM)	P	Lithic Scatter
AZ X:4:333(ASM)	P	Lithic Scatter
AZ X:4:334(ASM)	P	Lithic Scatter
AZ X:4:335(ASM)	P	Lithic Scatter
AZ X:4:336(ASM)	P	Lithic Scatter
AZ X:4:337(ASM)	P	Lithic Scatter
AZ X:4:338(ASM)	P	Lithic Scatter
AZ X:4:339(ASM)	P	Lithic Scatter
AZ X:4:34(ASM)	P	Cleared Area
AZ X:4:340(ASM)	P	Lithic Scatter
AZ X:4:341(ASM)	P	Rock Ring
AZ X:4:343(ASM)	P	Lithic Scatter
AZ X:4:344(ASM)	P	Rock Ring
AZ X:4:345(ASM)	P	Lithic Scatter
AZ X:4:346(ASM)	P	Lithic Scatter
AZ X:4:347(ASM)	P	Rock Ring
AZ X:4:348(ASM)	P	Lithic Scatter
AZ X:4:349(ASM)	P	Rock Ring
AZ X:4:35(ASM)	P	Cleared Area
AZ X:4:350(ASM)	P	Lithic Scatter
AZ X:4:351(ASM)	P	Lithic Scatter
AZ X:4:352(ASM)	P	Rock Ring
AZ X:4:353(ASM)	P	Rock Ring
AZ X:4:354(ASM)	P	Rock Ring
AZ X:4:355(ASM)	P	Rock Ring
AZ X:4:356(ASM)	P	Rock Ring
AZ X:4:357(ASM)	P	Rock Ring
AZ X:4:358(ASM)	P	Rock Ring
AZ X:4:359(ASM)	P	Rock Ring
AZ X:4:36(ASM)	P	Cleared Area
AZ X:4:360(ASM)	P	Trail Segment
AZ X:4:361(ASM)	P	Trail Segment
AZ X:4:362(ASM)	P	Trail Segment
AZ X:4:363(ASM)	P	Lithic Scatter
AZ X:4:365(ASM)	P	Cleared Area
AZ X:4:366(ASM)	P	Lithic Scatter
AZ X:4:367(ASM)	P	Lithic Scatter
AZ X:4:368(ASM)	P	Lithic Scatter
AZ X:4:369(ASM)	P	Lithic Scatter
AZ X:4:370(ASM)	P	Lithic Scatter
AZ X:4:371(ASM)	P	Lithic Scatter
AZ X:4:372(ASM)	P	Trail Segment
AZ X:4:38(ASM)	P	Cleared Area
AZ X:4:39(ASM)	P	Cleared Area
AZ X:4:40(ASM)	P	Cleared Area
AZ X:4:43(ASM)	P	Cleared Area
AZ X:4:45(ASM)	P	Cleared Area
AZ X:4:48(ASM)	P	Cleared Area
AZ X:4:50(ASM)	P	Cleared Area
AZ X:4:51(ASM)	P	Cleared Area
AZ X:4:52(ASM)	P	Cleared Areas

Site Number	Era*	Primary Site Type
AZ X:4:53(ASM)	P	Cleared Area, Compressed Gravel Area
AZ X:4:54(ASM)	P	Cleared Area
AZ X:4:55(ASM)	P	Cleared Area
AZ X:4:56(ASM)	P	Cleared Area
AZ X:4:57(ASM)	P	Cleared Areas
AZ X:4:58(ASM)	P	Cleared Area
AZ X:4:59(ASM)	P	Rock Rings
AZ X:4:60(ASM)	P	Rock Ring
AZ X:4:61(ASM)	P	Cleared Area
AZ X:4:62(ASM)	P	Cleared Area
AZ X:4:63(ASM)	P	Rock Clusters
AZ X:4:64(ASM)	P	Cleared Area
AZ X:4:65(ASM)	P	Rock Ring/Cluster
AZ X:4:67(ASM)	P	Cleared Area
AZ X:4:68(ASM)	P	Cleared Area
AZ X:4:69(ASM)	P	Rock Ring
AZ X:4:71(ASM)	P	Rock Ring
AZ X:4:72(ASM)	P	Rock Ring
AZ X:4:73(ASM)	P	Rock Ring
AZ X:4:74(ASM)	P	Rock Ring
AZ X:4:75(ASM)	P	Rock Ring
AZ Y:1:3(ASM)	P	Lithic Scatter
AZ Y:1:4(ACS)	P	Lithic Scatter
AZ Y:2:37(ASM)	P	Lithic Scatter
AZ Y:2:39(ASM)	P	Rock Ring
AZ Y:2:40(ASM)	P	Lithic Scatter
AZ Y:2:42(ASM)	H	Military WWII Training Area with numerous features
AZ Y:2:43(ASM)	H	Military Training Area
AZ Y:2:45(ASM)	H/P	Cleared Area, Rock Ring
AZ-050-1162	P	Rockshelter/Alcove
AZ-050-1202	P	Cleared Areas
AZ-050-1204	P	Lithic Scatter
AZ-050-1205	P	Rock Ring
AZ X:4:46(ASM)	P	Rock Ring
AZ X:4:47(ASM)	P	Cleared Area
AZ X:4:66(ASM)	P	Cleared Area

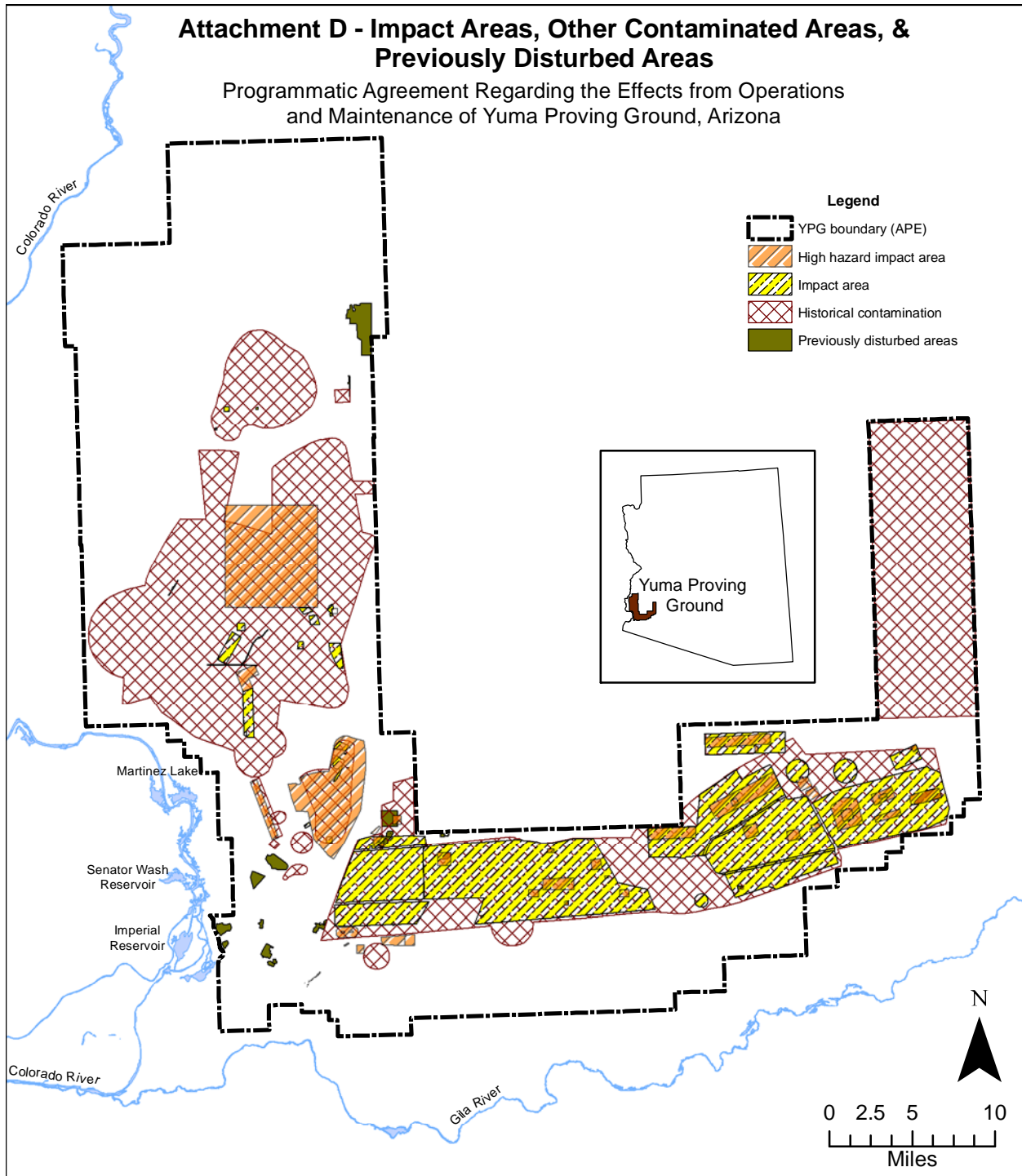
* Era: P = Prehistoric; H = Historic; H/P = Historic/Prehistoric (i.e., multicomponent)

Attachment C

List of Consulting Parties

Ak-Chin Indian Community
Chemehuevi Indian Tribe
Cocopah Indian Tribe
Colorado River Indian Tribes
Fort McDowell Yavapai Nation
Fort Mojave Indian Tribe
Gila River Indian Community
Hopi Tribe
Quechan Indian Tribe
Salt River Pima-Maricopa Indian Community
San Carlos Apache Tribe
Tohono O'odham Nation
Yavapai-Apache Nation
Yavapai-Prescott Tribe

Arizona Department of Transportation
Arizona Historical Society, Rio Colorado Division, Yuma
Arizona Power Service
Bureau of Land Management, Yuma Field Office
Western Area Power Administration



ATTACHMENT E

EXEMPT UNDERTAKINGS

The categories of undertakings listed below have been determined by USAG YPG, the SHPO, the ACHP, and Tribes to meet the criteria for exemption; i.e., they qualify as undertakings, but will have no effect on historic properties, or their potential effects will not be adverse. An undertaking of one or more of the types listed below will not require further Section 106 review with SHPO, so long as the undertaking is limited to the types listed below, and is not a part of another undertaking. In addition, if at any time in the course of the undertaking information becomes available that would make this procedure inapplicable, including but not limited to the discovery of historic properties or human remains, Section 106 review or NAGPRA protocol shall be initiated by USAG YPG in accordance with Stipulation III of this Programmatic Agreement.

A. EXEMPT UNDERTAKINGS PRESUMED TO HAVE MINIMAL POTENTIAL TO CAUSE EFFECTS

1. General Projects

- a. Removal or in-place disposal of unexploded ordnance.
- b. Disposal of ordnance in existing open burning/open detonation units.
- c. Emergency response to releases of potentially hazardous substances, pollutants, and contaminants that pose a threat to human health and safety.
- d. Activities required and regulated by the Arizona Department of Environmental Quality under the Resource Conservation and Recovery Act (RCRA) or the Defense Environmental Restoration (Army) (DERA) program. These include background research, geophysical characterization, and remediation of Solid Waste Management Units (SMWUs), Military Munitions Response Program (MMRP) sites, Comprehensive Environmental Response, Compensation, and Liability Act (CERCLA) sites. Associated activities such as installation of monitoring equipment will be subject to Section 106 review.
- e. Standard operations within approved landfills.
- f. Standard operations within approved borrow pits.
- g. Installation of stormwater sampling equipment in active washes.
- h. Continued use of small arms impact areas for small arms range activities.
- i. Continued use of dedicated impact areas for routine military weapons testing and training activities.
- j. Routine maintenance of existing non-historic improved or unimproved roads or tank trails where ground disturbance is limited to existing previously maintained road and shoulder.
- k. Routine maintenance of non-historic ditches, culverts or other rainwater conveyance structures.
- l. Studies, data collection, and monitoring for non-cultural resources purposes, provided there is no ground disturbance.
- m. Installation and operation of above-ground and buried utility and communication systems such as fiber optics, natural gas, and single pole electric lines in existing previously disturbed rights-of-way, easements, distribution systems, or facilities.
- n. Removal of dead, diseased, or damaged ornamental trees and shrubs, and trees and shrubs in the cantonment areas.

- o. Use of existing roads, test courses, gun positions, and test sites for routine test activities where operations are limited to existing facilities.
- p. Outdoor recreation programs such as hunting, in accordance with Yuma Proving Ground and Army regulations, and State of Arizona laws, when there will be no ground disturbance, including no off-road vehicle use.
- q. Treatment for insect infested plants and invasive species in areas that have been previously surveyed and contain no historic properties or where historic properties can be avoided.

2. Historic Districts

- a. In-kind repair/replacement of existing site improvements, including, but not limited to roads, parking areas, fences, recreation equipment, and signs.
- b. Repair or replacement of existing water, electric, gas, sanitary, cable, and underground or aboveground utilities.
- c. Grounds maintenance activities associated with installing, removing, and maintaining landscaping (mowing, trimming, planting, and weed/pest control).
- d. Removal of animals, birds, insects, and their associated debris when no damage to historic materials will result.
- e. Installation of facilities to provide access to historic properties by disabled persons provided the alterations are architecturally compatible with the facility, are freestanding, and do not damage nor require removal of historic materials.
- f. Disturbance in an area less than one square meter, such as placement of fence posts.
- g. Installation of perimeter security fencing and gates provided the design is architecturally compatible and does not require removal of historical materials.
- h. Maintenance, removal, and replacement in kind of existing landscape and plant materials when keeping with the historic character when they are dead, dying, diseased (unsalvageable), and/or pose an imminent hazard to people or structures.

B. ACTIVITIES PRESUMED TO HAVE MINIMAL POTENTIAL TO CAUSE EFFECTS, WITH ADDITIONAL SCREENING

An undertaking of one or more of the types listed below will not require further Section 106 review with SHPO, so long as the undertaking and/or its effects:

- (1) are not adjacent to or within a historic property or historic district;
- (2) do not involve soil disturbance within 200 meters of a known or recorded archaeological site; and
- (3) do not involve modification of a building or structure that is 45 or more years old unless such building or structure has previously been determined not eligible for the NRHP.

For each of the activities below, the USAG YPG CRM, or a USAG YPG Cultural Resources Specialist, in consultation with the USAG YPG CRM, shall determine if the above three conditions apply. If it meets the three conditions above, the undertaking will not require further Section 106 review. Also, consideration of whether or not there was a cultural resources survey conducted during original construction will be factored in by the Cultural Resources Specialist, if that is applicable. If the USAG YPG CRM or a USAG YPG Cultural Resources Specialist determines that any one of these conditions is not met, the requirements of Stipulation I.B. of the PA will apply.

1. Maintenance, Repair, Renovation, Replacement, New Construction, and Demolition Operations

- a. New construction of buildings and other above and below ground infrastructure and related activities.
- b. Maintenance, repair, and related activities on existing facilities and infrastructure not greater than 45 years old and those facilities older than 45 years of age but previously determined not eligible for the NRHP.
- c. Renovation of existing buildings and infrastructure not greater than 45 years old or older than 45 years of age but previously determined not eligible for the NRHP.
- d. Demolition of buildings and other infrastructure not greater than 45 years old or older than 45 years of age but previously determined not eligible for the NRHP.
- e. Maintenance, repair, or replacement of existing above-ground and buried utility and communication systems in previously disturbed rights-of-way, easements, distribution systems, or facilities where the structures are not greater than 45 years old or have previously been determined not eligible for the NRHP.
- f. Stockpiling and staging of construction, road repair, and paving materials in surveyed areas with no historic properties present.
- g. Natural resources management activities including tree plantings, planting and maintenance of wildlife food and shrub plots and guzzlers in previously disturbed areas, and improvement of existing dry stream crossing where the depth of the undertaking will not exceed the current disturbance and/or will not impact an intact soil layer with the potential to contain cultural materials.

2. Grounds and Land Maintenance

- a. Installation, maintenance, and repair of recreational structures and equipment.
- b. Ground disturbing activities to control, prevent, or repair soil erosion due to rain runoff.
- c. Grounds maintenance activities associated with installation, removal, and maintenance of landscaping (mowing, trimming, planting, rock hardening, prescribed burning, and weed/pest control).
- d. Routine repair and maintenance of airfields and associated equipment.
- e. Construction of improved roads and tank trails where ground disturbance is contained to existing rights-of-way or previously disturbed areas.

C. UNDERTAKINGS ADDRESSED THROUGH USAG YPG AGREEMENTS

Undertakings addressed through a fully executed USAG YPG memorandum of agreement, memorandum of understanding, or comprehensive agreement will be carried out in accordance with the terms of such documents and are not subject to the terms of this PA, as follows:

1. **US Army YPG/Cocopah Tribe Cooperative Agreement: Services Between the U.S. Army Yuma Proving Ground and the Cocopah Indian Tribe Cocopah Museum, Somerton, Arizona, 2005; modified 2011.** Cooperative agreement provides for curation of archaeological artifacts and associated records at the Cocopah Museum per 36 CFR 79.
2. **Memorandum of Understanding between the Yavapai-Prescott Indian Tribe and U.S. Army Garrison Yuma Proving Ground, 2010.** This memorandum of understanding establishes responsibilities through which USAG YPG carries out consultations with the Yavapai-Prescott Indian Tribe.

Standard Operating Procedure #5

INADVERTENT DISCOVERY OF ARCHAEOLOGICAL DEPOSITS

OVERVIEW

Archaeological investigation methods are designed to discover material evidence of past cultural activities. It is possible; however, that buried archaeological deposits may remain undetected during the survey process, only to be exposed by later construction or other ground-disturbing activities.

POLICY

In the event that archaeological deposits are encountered during any construction or excavation activities, the activity shall stop and the YPG Cultural Resources Manager shall be notified. Because of the potential of each archaeological deposit to contain Native American human remains or cultural materials, failure to report discovery of archaeological deposits may result in violation of NAGPRA, ARPA, and other related federal and state laws resulting in fines and penalties against YPG and its Commander. If it is determined that human remains encountered during a project are not of Native American origin, then the Emergency Services Directorate should be notified immediately. This office will contact the County Medical Examiner or Coroner for further action.

PROCEDURES

When notified of the possible discovery of archaeological deposits or material, the Cultural Resources Manager will visit the discovery site within one working day of notification to examine the discovered material and any in situ deposits. A determination of NAGPRA, ARPA, and NHPA compliance will be made by the Cultural Resources Manager (or a designee [professional contract archaeologist]) upon identification of the discovered material as archaeological or historic in origin. If the Cultural Resources Manager determines that the site contains human remains, funerary objects, sacred objects, or objects of cultural patrimony, the procedures in SOP #8 of this ICRMP will be implemented. If the objects are determined to be not covered under NAGPRA, the procedures outlined in this SOP will be followed:

If, upon examination, the discovered materials are clearly of European-American origin, the Cultural Resources Manager will conduct a test of the discovery site, following procedures outlined in SOP #6. The test will include evaluation of the primary context of the deposit, probable age, and assessment of significance to determine National Register eligibility.

If, upon examination of the recovered material, it appears that the discovered deposits are of natural origin and not of paleontological significance, the Cultural Resources Manager shall advise the project manager that they may proceed with project activities.

SOP #5

Appendix K

If archaeological materials are present and disturbance has been limited, the Cultural Resources Manager will recommend that the activity be relocated to avoid the site until compliance with the Section 106 process and evaluation for National Register eligibility may be completed. If the activity cannot be relocated, the Cultural Resources Manager shall consult with the Arizona SHPO. Unless the activity is of the nature of an actual emergency (natural disaster or declaration of war), site activity must stop until consultation with the Arizona SHPO and/or Council is completed. Failure to cease activities that intentionally destroy archaeological deposits prior to evaluation and determination of National Register eligibility in accordance with 36 CFR Part 800 may result in fines and penalties under ARPA against the project manager and in some instances the Garrison Manager.

The Cultural Resources Manager will contact the Arizona SHPO to obtain concurrence on the National Register eligibility determination of the site. If both the Arizona SHPO representative and the Cultural Resources Manager agree that the discovered archaeological deposit is not eligible for the National Register, the correspondence will be documented. The Cultural Resources Manager may then advise the project manager to proceed with project activities, although the Cultural Resources Manager will monitor the remainder of excavation activities to ensure that National Register-eligible deposits are protected.

If, in the opinion of either the Arizona SHPO or the Cultural Resources Manager, the recovered materials are of insufficient quantity or otherwise nondiagnostic to make a valid assessment of National Register eligibility, an emergency mitigation plan may be developed by the Cultural Resources Manager, in consultation with the Arizona SHPO. Further ground disturbing activities in the immediate site vicinity shall be halted pending the accomplishment of the emergency mitigation plan. The Cultural Resources Manager may request that an Arizona SHPO representative be present on site to consult directly on the assessment of the site's National Register eligibility. The Arizona SHPO may choose to send a representative to observe the emergency mitigation plan without prior request by the Army, however, access to the site by non-Army personnel must be approved by and coordinated with the cultural resources office.

If the site is determined eligible, or if the Army and the Arizona SHPO cannot reach an agreement on determination of eligibility, the following alternative actions are available:

- Reconsider relocating the project to avoid adverse effect (this is always the preferable course of action).
- Develop a MOA with the Arizona SHPO that specifies the scope and extent of data recovery required to mitigate the project impact.

Where data recovery (mitigation) is limited in scope and such action is amenable to the Arizona SHPO, the Army may elect to proceed without development of an MOA. All aspects of data recovery will be fully documented and reported to the Arizona SHPO in the form of a written report at the termination of data recovery efforts.

SOP 15

Appendix K

When recovery of human remains is considered likely, the Army shall comply with NAGPRA and related federal and state law. Such procedures will be coordinated with the Arizona SHPO and Native American tribes that may be culturally affiliated with the human remains or other items covered under NAGPRA.

The Army may elect to comply with 36 CFR Part 800.13(b), developing and implementing actions that take into account the effects of the undertaking on the property and requesting comments of both the Arizona SHPO and the Council (as appropriate). Section 106 and 36 CFR Part 800 do not require the federal agency to stop work on the undertaking. However, depending on the nature of the property and the undertaking's apparent effects on it, the agency official shall make reasonable efforts to avoid or minimize harm to the property until the requirements of 36 CFR Part 800 are met.

SYNOPSIS

The following synopsis of this SOP shall be made known on all proposed actions and YPG Digging Permit Approval forms:

- There is always the potential for previously unidentified archaeological deposits not discovered during the initial inventory process. If archaeological materials are discovered during construction or excavation activities, the Cultural Resources Manager shall be notified and the materials shall undergo review as required under the NHPA.
- In the event that Native American human remains or cultural items are discovered, federal law directs specific procedures that must be followed and establishes criminal and civil penalties for noncompliance. If human remains are encountered, all project activity on or near the discovery site shall cease immediately. The human remains shall be protected from further disturbance and the Cultural Resources Manager notified immediately.

###

SOP #5